

An underwater photograph of a coral reef. The scene is dominated by a large, branching yellowish-brown coral structure in the center. To its right, there is a large, greyish, porous coral formation. The water is clear and blue, with several small fish swimming around. The overall lighting is bright, suggesting a shallow depth.

# **Regional Initiative for Coral Reefs Conservation and Management in the South Pacific**

**Project # 2 - 2B**

## **Reef Restoration**

**Project team : CAREX Environnement - Consulting engineers, France  
FSPI - Foundation of the Peoples of the South Pacific  
International, Fiji**

# CAREX Environnement

Environmental Consulting Engineers  
Aix-en-Provence, France

Specialised in tropical studies

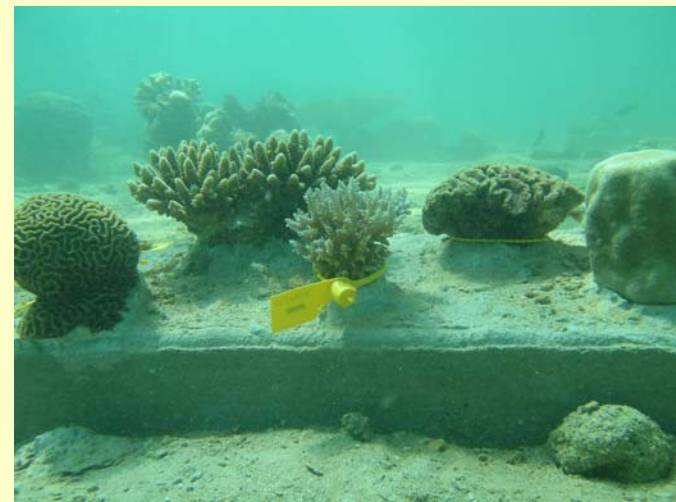
- Biological assessment & monitoring
- Marine resources management plans
- Engineering in coastal & marine areas
- Reef mapping (G.I.S.)



# CAREX Environnement

## Reef Restoration Activities

- Use of artificial structures and natural substrata
- Coral transplantation and coral planting
  - **Moorea** : Coral Garden
  - **Bora Bora** : Shoreline protection and coral garden
  - **Mayotte** : Coral rescue (EIA) and scientific experiment
  - **Guide** on reef restoration



# FSPI

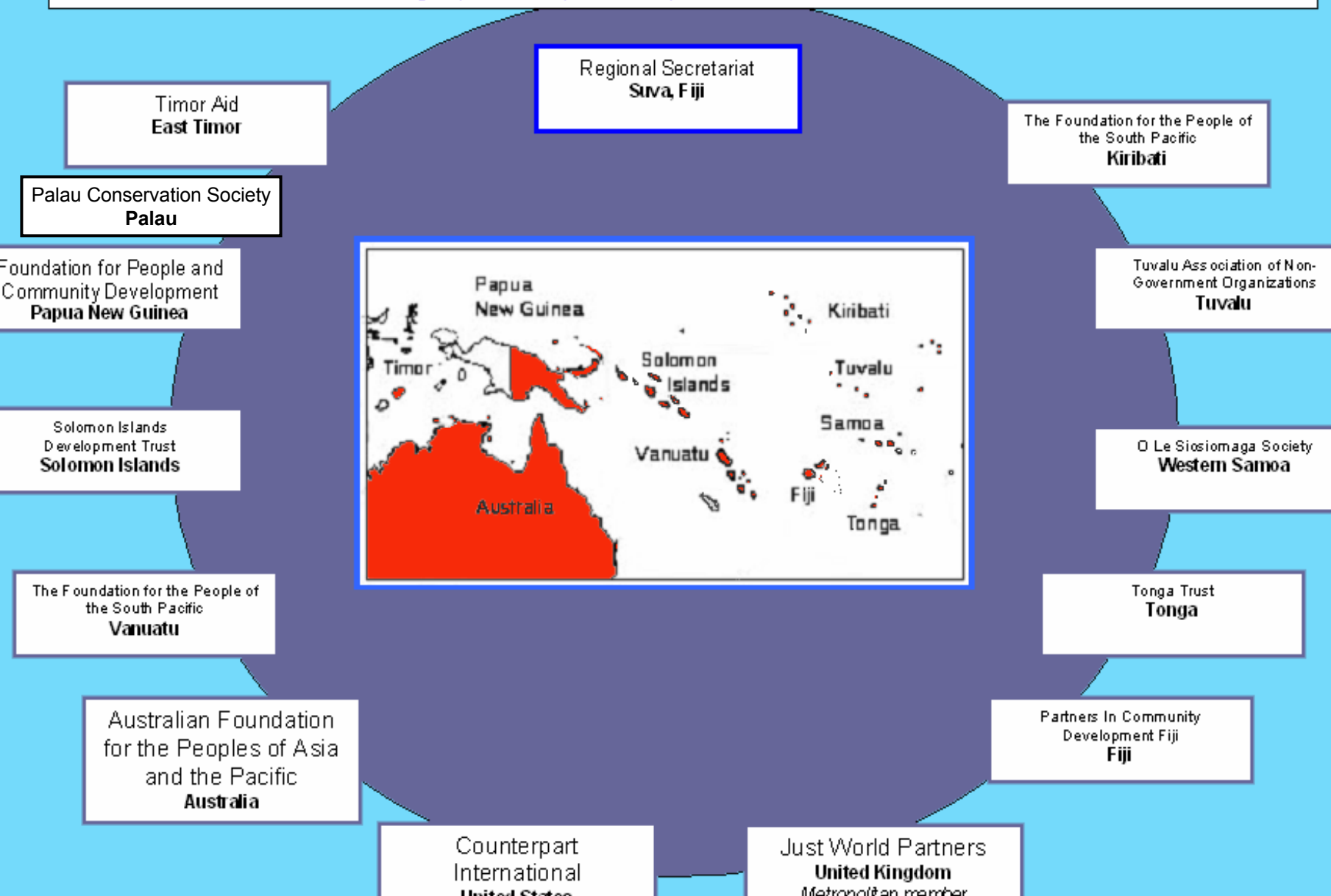


## Foundation of the Peoples of the South Pacific International Secretariat

FSPI works with Pacific communities  
through people-centred programmes  
to foster self-reliance within  
a changing world

# The Foundation of the Peoples of the South Pacific International

FSP International is a network of independent South Pacific NGO's  
working in partnership in development across the South Pacific



# Project Organisation

## Phase 1

### Organisation

Overall  
project  
organisation

Restoration  
sites selection

## Phase 2

### Field work

- Preliminary studies
- Restoration field work
- Monitoring surveys

## Phase 3

"Book"  
on reef  
restoration

## Phase 4

Final  
synthesis  
Project  
delivery

# Phase 1

- **Bibliography research**

- Past, in progress or planned reef restorations
- Assessment of the needs for reef restorations in the South Pacific

## Technical Workshop - Nouméa (January 2005)

- **Overall organisation**

FSPI/CAREX and other CRISP projects

- **Selection of 2 restoration sites**

Sites should be chosen according to local communities needs and approval, potential for reef recoverability and other CRISP projects (MPAs)

# Phase 2

- Preliminary studies

- Bibliography
- Precise location of the restoration site
- Initial environmental assessment (Point 0)
- Restoration strategy : methodology, logistics, etc.

**1 week per site - FSPI:CAREX = 1:1**

- Restoration field work

**2 weeks per site - FSPI:CAREX = 1:1**



# Phase 2

- Monitoring surveys

- 4 surveys : +1, +6, +12 and +18 months after the end of restoration efforts
- Conducted by FSPI and local teams (communities participation)

**1 week per site, per survey - FSPI:CAREX = 4:1**



# Phase 3

## Writing of documents related to reef restoration

- Edition of a **book** for management and decision-making
- Production of **community materials** (pamphlet, guide, handbook, comics, etc.)
- In French and English



**FSPI:CAREX = 1:4**

# Phase 4

- **Final synthesis report and future prospectives** (e.g. Integrating the results into existing networks and training the different users, managers and scientists)
- **Project delivery to stakeholders and AFD**

**FSPI:CAREX = 1:1**



Merci à  
l'AFD !